



Drought Information Statement for Southeast TX and Southwest LA

Valid April, 9, 2026

Issued By: WFO Lake Charles, LA

Contact Information:

- This product will be updated April, 17th, 2026 or sooner if drought conditions change significantly.
- Please see all currently available products at <https://drought.gov/drought-information-statements>.
- Please visit <https://www.weather.gov/LCH/DroughtInformationStatement> for previous statements.
- Please visit <https://www.drought.gov/drought-status-updates/> for regional drought status updates.

- **DROUGHT CONDITIONS REMAIN STEADY THIS WEEK. MINIMAL RAINFALL IS EXPECTED NEXT WEEK.**



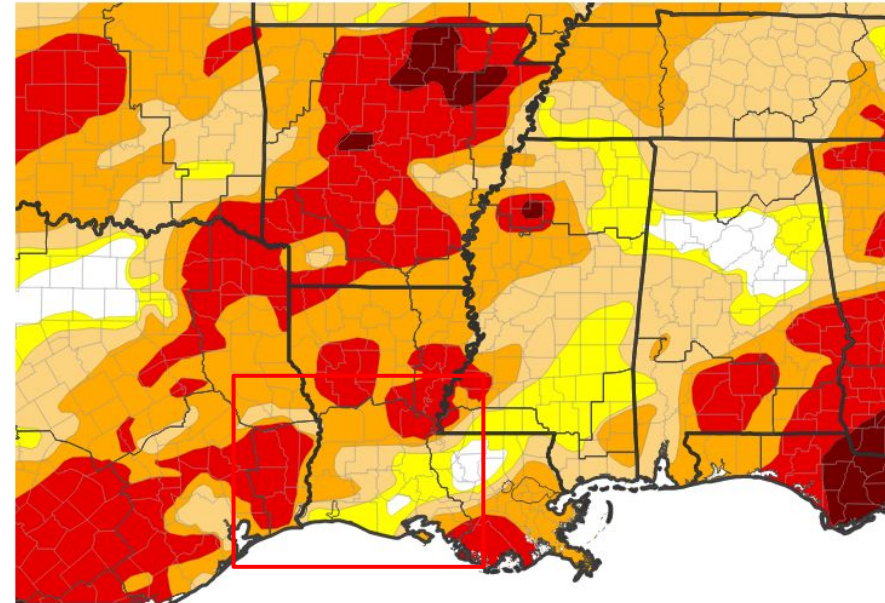


U.S. Drought Monitor

Link to the [latest U.S. Drought Monitor](#)

- Drought Intensity and Extent
 - **D3 (Extreme Drought)**: Rapides and Avoyelles Parishes in Louisiana. Jefferson, Jasper, Newton, Hardin and Tyler Counties in Texas
 - **D2 (Severe Drought)**: Calcasieu, Beauregard, Vernon and St. Mary Parish.
 - **D1 (Moderate Drought)**: Allen, Evangeline St. Landry, Calcasieu, Jefferson Davis, Acadia, Iberia and Small portions of Cameron.
 - **D0: (Abnormally Dry)**: Cameron, Lafayette, St. Martin and St. Landry Parish.

U.S. Drought Monitor



U.S. Drought Monitor



Source(s): NDMC, NOAA, USDA, NASA; image courtesy of Drought.gov

Data Valid: 04/07/26



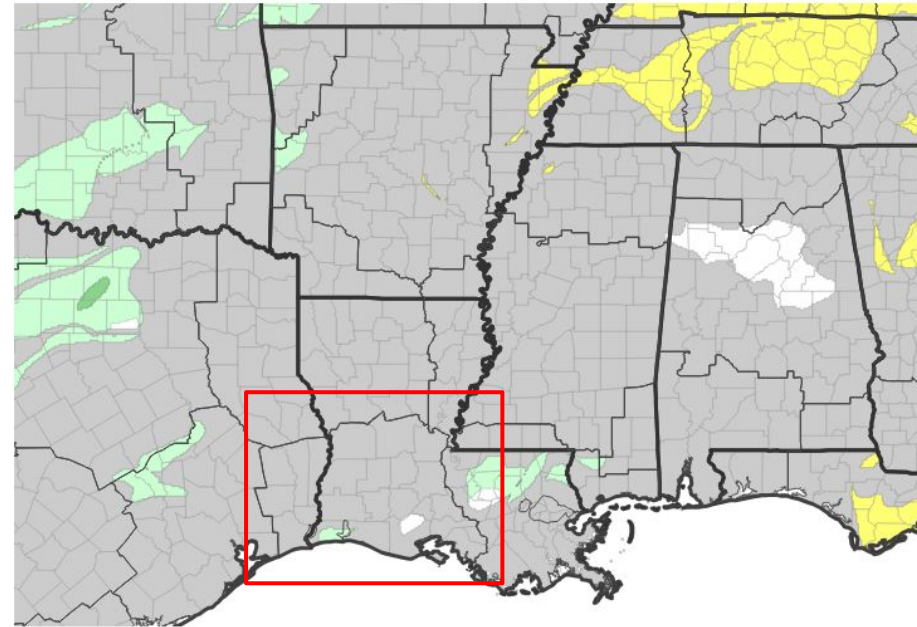


Recent Change in Drought Intensity

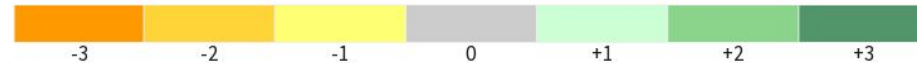
Link to the latest [1-week change map](#)

- One Week Drought Monitor Class Change.
 - Drought Worsened: None.
 - No Change: over most of the area.
 - Drought Improved: slightly over portions of Western Cameron.

U.S. Drought Monitor 1-Week Change Map



Drought Change Since Last Week



Source(s): NDMC, NOAA, USDA, NASA; image courtesy of Drought.gov

Data Valid: 04/07/26



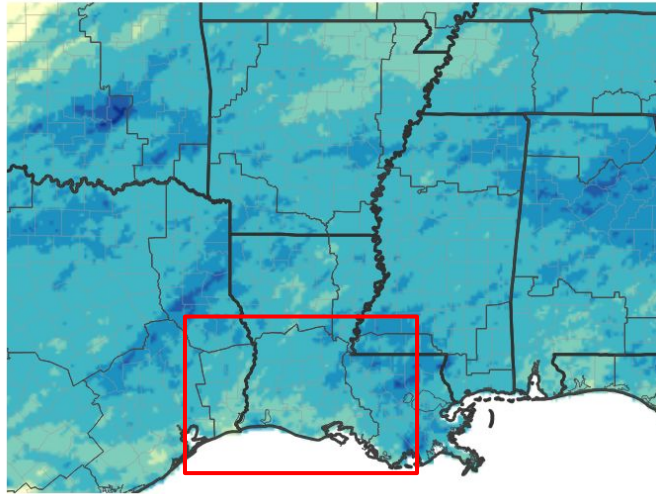


Precipitation

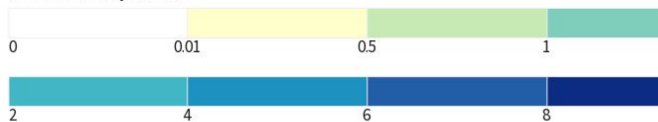
For the past 30 days

- Rainfall over the past 30 days is running 25 to around 75 percent of normal across the entire area with the exception of portions of St. Landry and a small portion of Cameron where amounts indicate slightly above normal precipitation over the past 30 days.

NWPS 30-Day Precipitation Accumulations (inches)

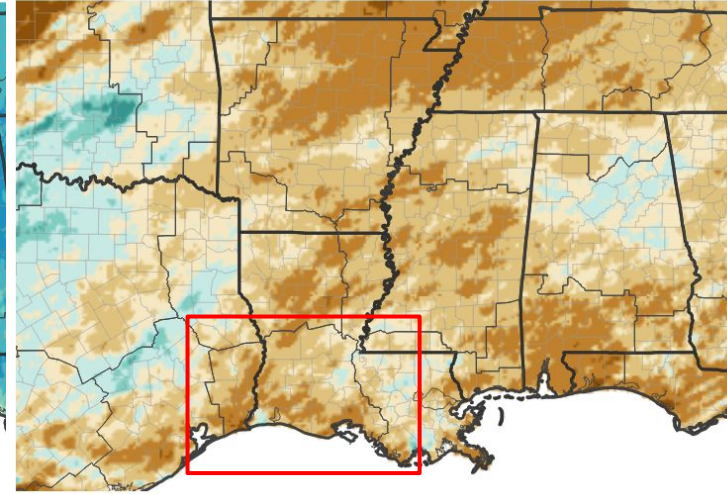


Inches of Precipitation

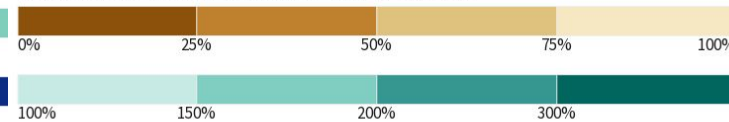


Source(s): National Weather Service National Water Prediction Service; image courtesy of Drought.gov

30-Day Precipitation: Percent of PRISM Normal



Precipitation Shown as a Percentage of Normal Conditions



Data Valid: Source(s): National Weather Service National Water Prediction Service; image courtesy of Drought.gov Data Valid: 04/08/26



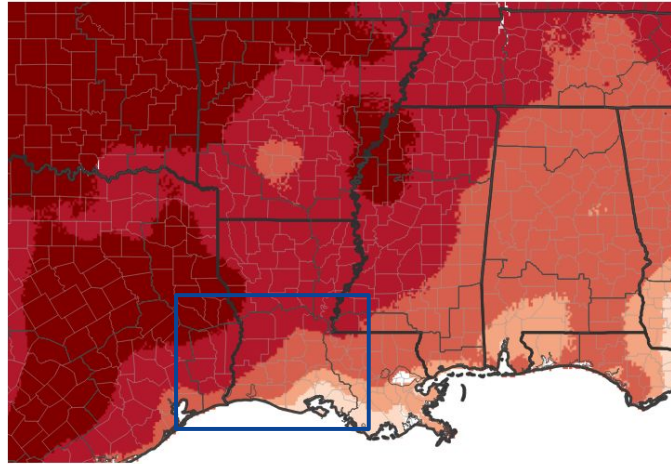


Temperature

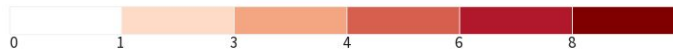
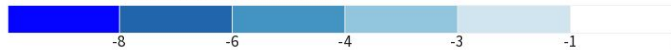
Link to [Southern Regional Climate Center](#)

- Temperatures have been above normal area wide across the region the past week.
- Above normal temperatures have been noted the previous 30 days.

7-Day Temperature Anomaly



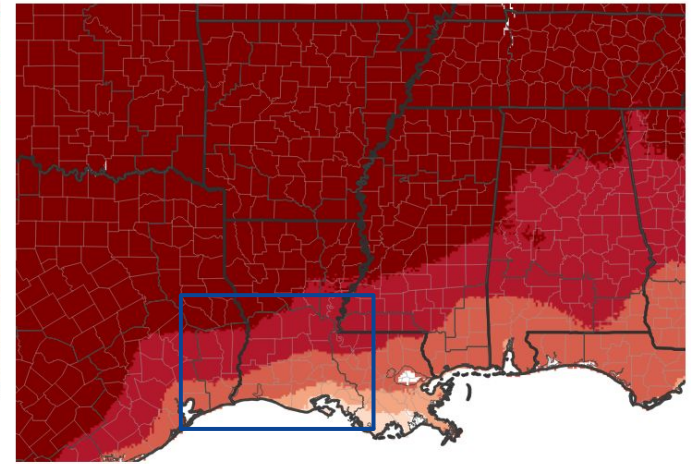
Departure from Normal Max Temperature (°F)



Source(s): NOAA's National Centers for Environmental Information; image courtesy of Drought.gov

Data Valid: 03/31/26

30-Day Temperature Anomaly



Departure from Normal Max Temperature (°F)



Source(s): NOAA's National Centers for Environmental Information; image courtesy of Drought.gov

Data Valid: 03/31/26





Summary of Impacts

Links: See/submit [Condition Monitoring Observer Reports \(CMOR\)](#) and view the [Drought Impacts Reporter](#)

Hydrologic Impacts

- Observed river flows are below to much below normal in all river basins.

Agricultural Impacts

- None known this week

Fire Hazard Impacts

- Recent fire activity has lessened with the onset of green up and increased humidity.
- Burn bans are currently in place for Tyler, Jasper and Newton Counties in Texas.

Other Impacts

- There are no known impacts at this time.

Mitigation Actions

- Please refer to your municipality and/or water provider for mitigation information.

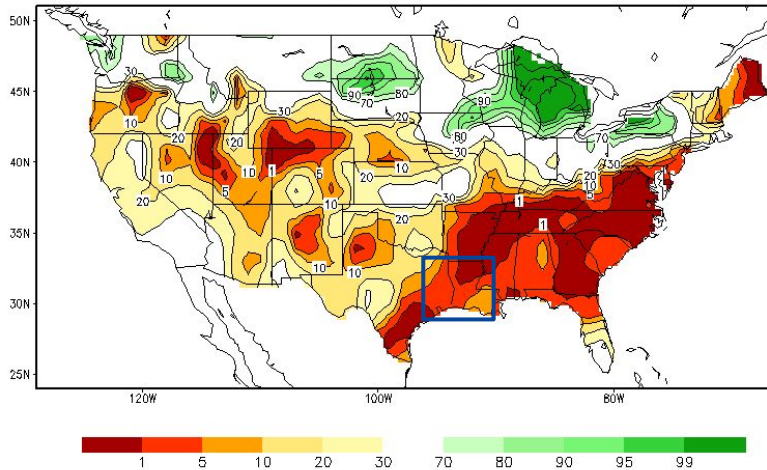




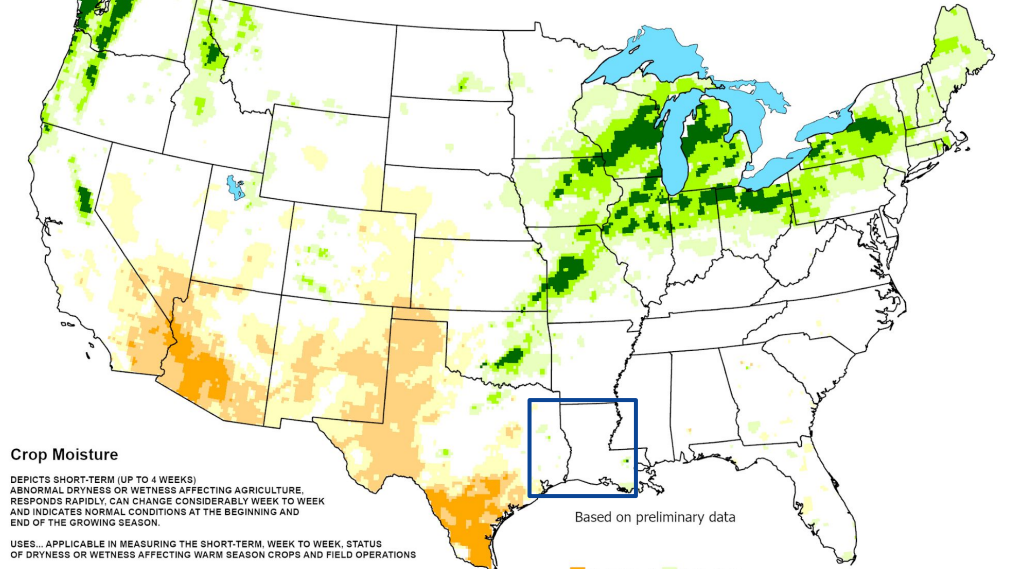
Agricultural Impacts

- Soil moisture is below normal across the area with shallow short term soil moisture near normal.

Calculated Soil Moisture Ranking Percentile
APR 08, 2026



Crop Moisture Index
Value for the March 29 - April 4, 2026
Short Term Need vs. Available Water in a Shallow Soil Profile

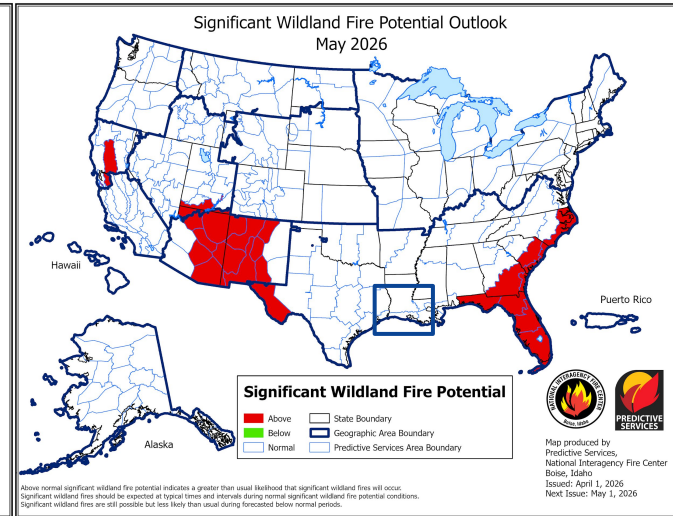
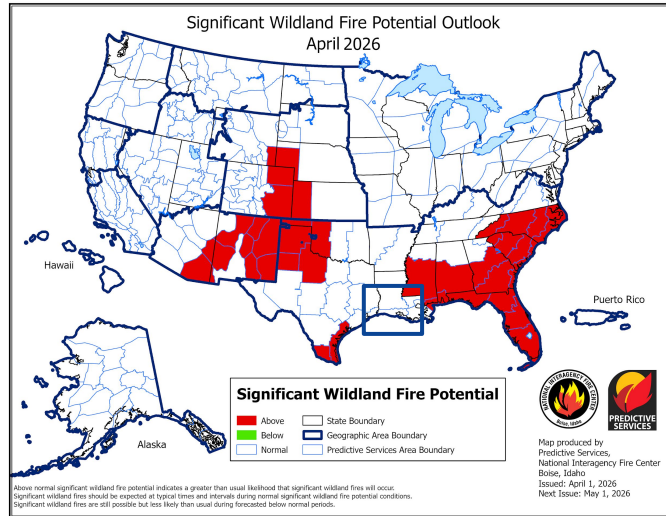




Fire Hazard Impacts

Link to [Wildfire Potential Outlooks from the National Interagency Coordination Center.](#)

- Burn Bans remain in place for Jasper, Newton and Tyler counties.
- Wildfire conditions are expected to remain near normal in April and May.



Latest TX Burn Ban map available [here.](#)

Latest LA Burn Ban map available [here.](#)

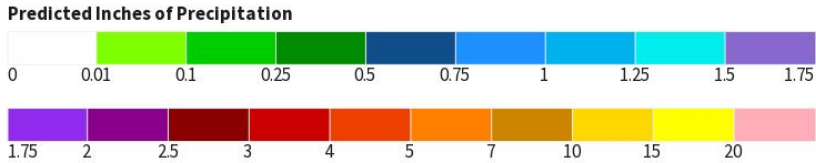
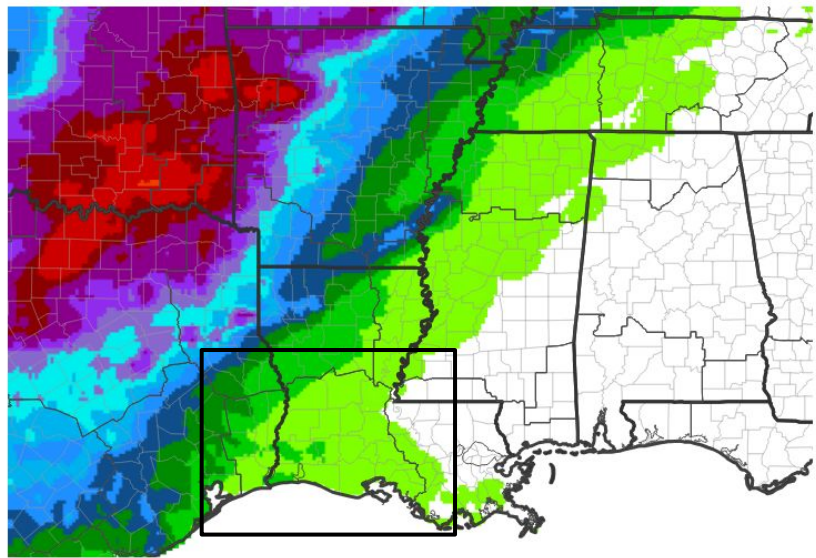




Seven Day Precipitation Forecast

- Little to no rainfall is expected over much of the region. One quarter of an inch or less is forecast across the western portions of the area.

7-Day Quantitative Precipitation Forecast for April 9, 2026-April 16, 2026



Source(s): National Weather Service Weather Prediction Center; image courtesy of Drought.gov Last Updated: 04/09/26

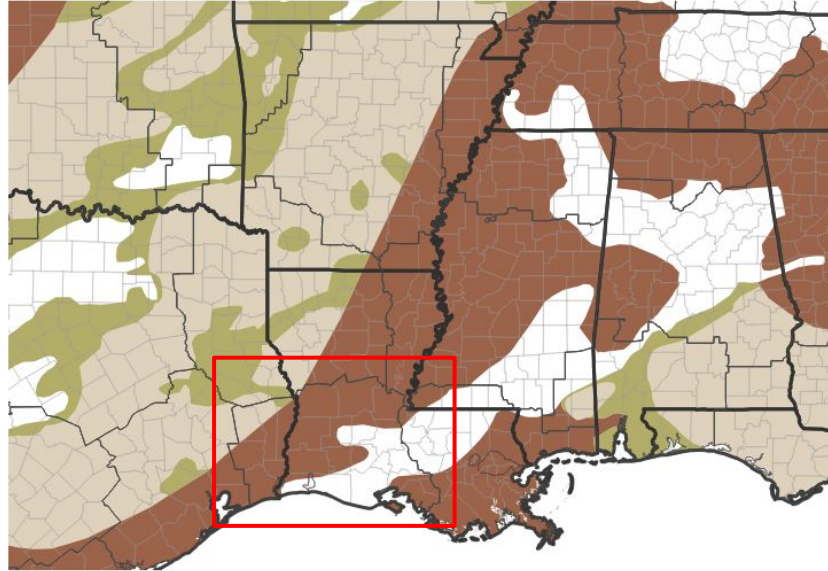


Drought Outlook

The latest monthly and seasonal outlooks can be found on the [CPC homepage](#)

- Drought conditions are expected to improve around the East Texas Lakes and persist where drought conditions are currently ongoing.

Seasonal (3-Month) Drought Outlook for March 31, 2026–June 30, 2026



Drought Is Predicted To...



Source(s): Climate Prediction Center; image courtesy of Drought.gov

Last Updated: 03/31/26

Links to the latest:

[Climate Prediction Center Monthly Drought Outlook](#)

[Climate Prediction Center Seasonal Drought Outlook](#)



National Oceanic and
Atmospheric Administration

U.S. Department of Commerce

National Weather Service
WFO Lake Charles, LA